



Land Rover Solutions

Tel: +44 (0) 1422-847704

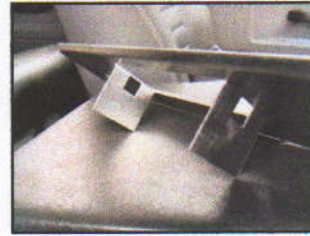
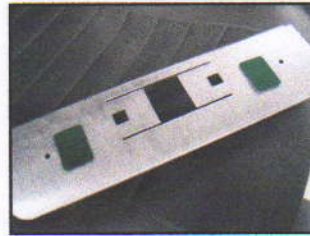
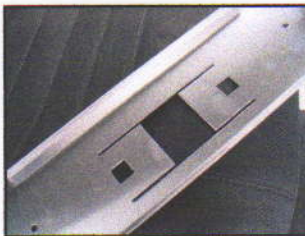
www.mudstuff.co.uk

MudPod Fitting Instructions

Remove the ashtray from the top of the dashboard. The ashtray is secured with a spring clip at each side. Route your wiring through this aperture.



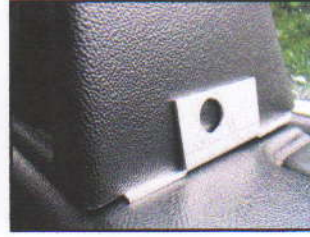
Take the base plate and bend the tabs in the central cut-out to 90 degrees so they face straight down as illustrated far right below. At this stage you have the option to secure the MudPod base plate with the double-sided sticky pads provided. Before attaching the sticky pads, degrease and clean the base plate and dashboard surface with white spirit or similar. Remember to attach the sticky pads to the base plate before bending the fixing tabs into position.



Offer up the base plate to the dash sliding the tabs down inside the ashtray aperture. The taller upright fold should be to the windscreen side of the dash. With the base plate sat flush on top of the dash, reach down inside the aperture and by pressing firmly, bend the securing tabs all the way back under the dash trim as far as they'll go.



Position the MudPod over the base plate keeping one of the side fixing plates to the OUTSIDE of the MudPod as illustrated below. Mark a fixing hole slightly towards the top of the hole in the mounting plate to take into account the thickness of the base plate. Repeat the procedure for the opposite side of the console.

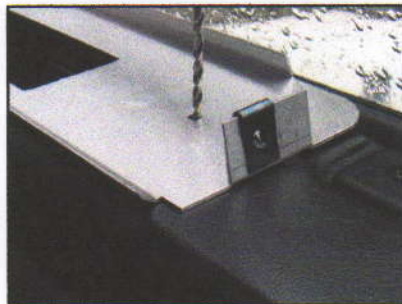


Remove the MudPod and drill the fixing holes with a 4.5mm drill. Take the spire-clips and slide over the tabs on the end plate. The smooth face of the spire clips should face outwards. Position the MudPod over the mounting frame and secure using the two short screws supplied.



Additional Fitting Information

The unique MUD designed mounting plate dispenses with the need for any fixings screwed into the top of your dashboard. This feature allows you to transfer the MudPod between vehicles without leaving any permanent damage to the dashboard. We have however provided you with two screws and two screw holes within the base plate should you wish to make your MudPod a more permanent fixture or locate the MudPod in an alternative location. Immediately beneath the plastic outer surface of the Defender dashboard trim is a metal framework for you to screw down into. Use the two longer screws provided for dashboard fixing.



MUD-UK © 2007

No part of these instructions can be copied, sold or resold without the authorisation of MUD-UK