

MUD-UK Centre Dash Panel Fitting Instructions

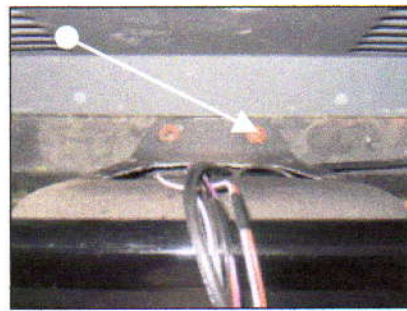


Land Rover Solutions

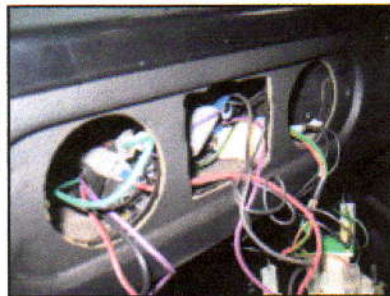
+44 (0)1422-847704

www.mudstuff.co.uk

The MUD Centre Panel replaces the centre panel in any pre 02-model year Defender. To remove the panel from the dashboard, undo the two Philips headed retaining screws on the front face of the panel. Securing nuts can be located on the inside of the dash tray. Retain the screws and nuts, as these will be used when refitting the new panel into the dash. When wiring in additional switches and sockets, you'll need to remove the two additional screws trim fixings in the plastic dash tray.



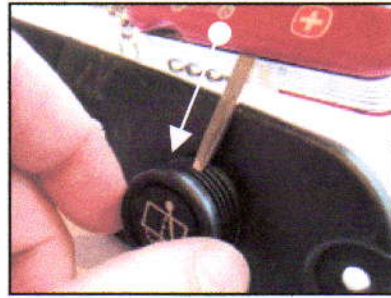
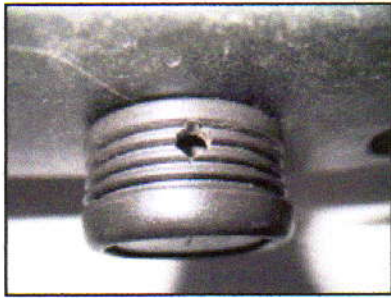
Before removing any of the wiring from the cigarette lighter socket and rear wash wipe control make a note of the wiring layout for the respective controls.



To remove the cigarette lighter socket from the plastic centre panel, release the latch on the green bezel and push out the centre (white portion) of the socket. The green bezel is split to allow you to remove it. If you are upgrading the standard 12v socket to one of our marine grade sockets, remove the bulb from the bulb holder on the cigarette socket. This wire and the bulb holder are now redundant.



To remove the rear wash wipe switch from the factory panel, locate the small hole on the underside of the control knob. To release the control knob, use a sharp pointed tool to press down on the spring loaded locking peg inside the hole. With the locking peg depressed the knob will slide off the shaft. Once the knob has been removed undo the retaining the nut to release the control from the panel.

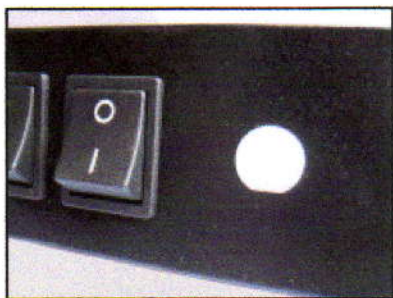


Remove the centre portion of the dash with hacksaw, tin snips or cutting disc. Clean up any sharp edges with a file.



When fitting multiple power sockets use a separate fused supply for each socket. DO NOT piggyback the wiring from one socket to another. Marine sockets are rated at 16-amps each.

The RWW control can be installed on the right-hand or left-hand side of the Centre Panel to suit personal preference. Orientate the front face of the Centre Panel so that the flat within the RWW cut out is toward the bottom edge of the panel.



When refitting the panel, reusing the plastic washers is optional. We prefer not to.

The MUD Centre Panel can be used to relocate the rear wash wiper; hazard switch and interior light switch from their standard location by extending the existing wiring into the central dash location. Make a note of the wiring for the respective switches. Cut the plugs for the switches leaving a generous amount of wiring for connecting onto your extension leads. A soldered connection protected with heat shrink tubing is the recommended method for joining the wiring. Reuse the standard plugs for connecting onto the switches relocated into the MUD Switch Panel.